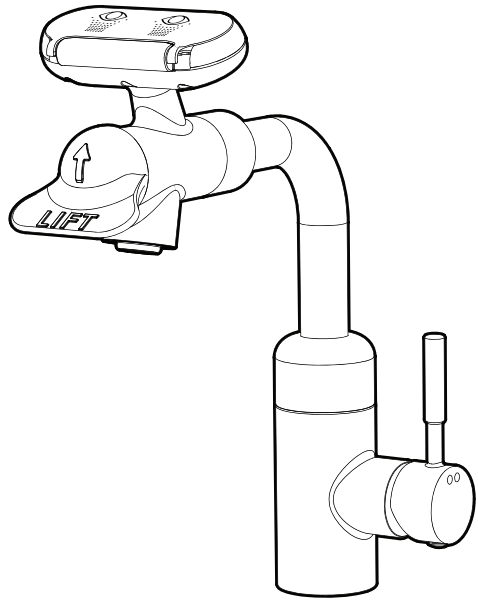


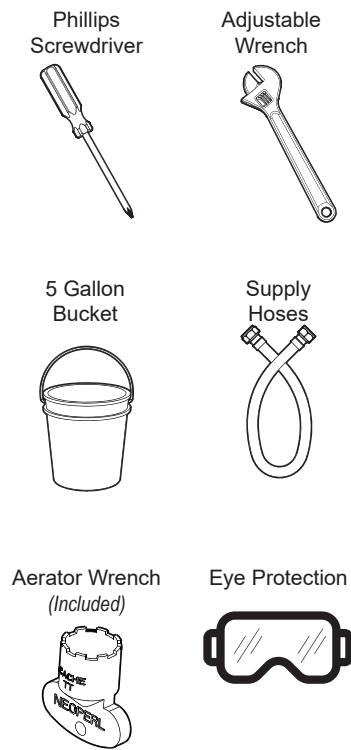
INSTALLATION INSTRUCTIONS

SEF-1880 Eyesaver® Faucet with Single Lever Control Handle



92-SEF-1880-02

TOOLS & SUPPLIES NEEDED



IMPORTANT

SAFETY TIPS:

Be sure to read and understand all instructions before beginning installation.

Inspect all connections after installation.

Cover the drain to avoid loss of parts.

Be sure to wear proper eye protection.

Do NOT over tighten any connections or damage may occur.

Shut OFF water supplies before beginning installation.

Observe all local plumbing and building codes.

VALVE SPECIFICATIONS:

This Eyesaver Faucet has an operating range of 30-80 psi.

This Eyesaver is engineered to be used in conjunction with a Thermostatic Mixing Valve. A Speakman STW Series Thermostatic Mixing Valve is recommended.

CAUTION

The supply line for the eyewash shall provide an uninterrupted supply of flushing fluid at a minimum of 30 psi flowing pressure. If shut off valves are installed in the supply line of the eyewash, provisions shall be made to prevent unauthorized shut off. ANSI Z358.1 requires that all emergency equipment shall be tested weekly to verify proper operation and inspected annually to assure conformance with ANSI Z358.1 requirements.

MAINTENANCE

FINISH MAINTENANCE:

Your new product is designed for years of trouble-free performance. Keep it looking new by cleaning it periodically with a soft cloth. Avoid abrasive cleaners, steel wool, and harsh chemicals as these will dull the finish and void your warranty.

NEED HELP?

For additional assistance or service please contact:



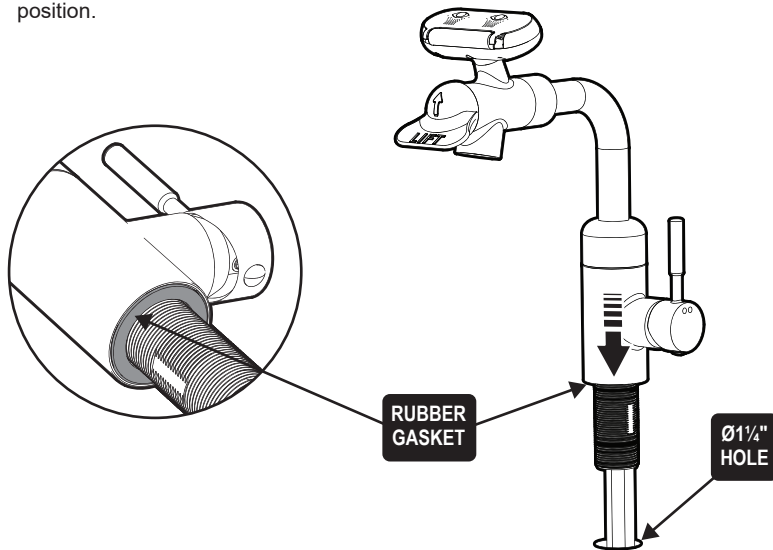
800-537-2107



www.speakman.com

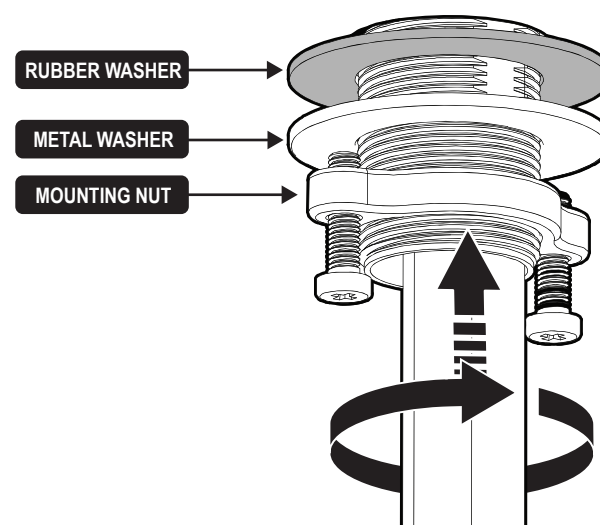
POSITION EYESAVER® FAUCET

- 1 Ensure water supplies are "OFF". If replacing an existing Faucet, Remove existing Faucet and clean mounting surface. Verify that the Rubber Gasket is in position within the base of the Faucet. Place Hoses carefully, one at a time, through hole in mounting surface. Lower Faucet into position.



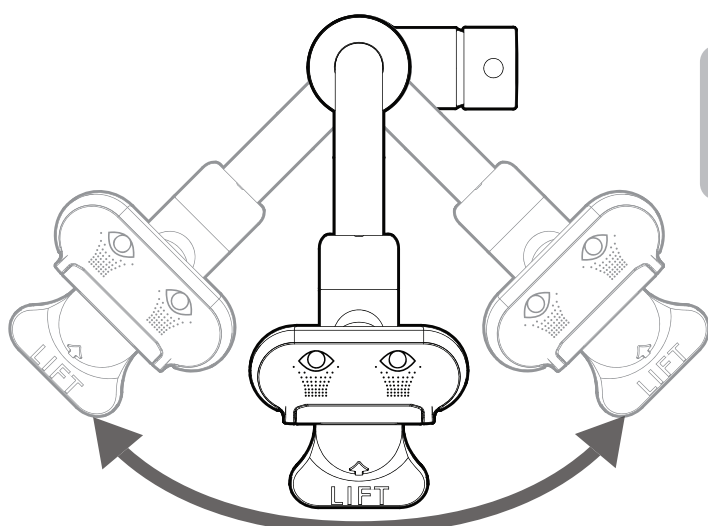
INSTALL MOUNTING HARDWARE

- 2 From below, install the Rubber Mounting Washer, Metal Washer, and Mounting Nut. Hand tighten into position.



VERIFY ALIGNMENT

- 3 This Faucet has an integral swivel feature. Verify sweep of Faucet Spout and align properly before securing Faucet into final position.

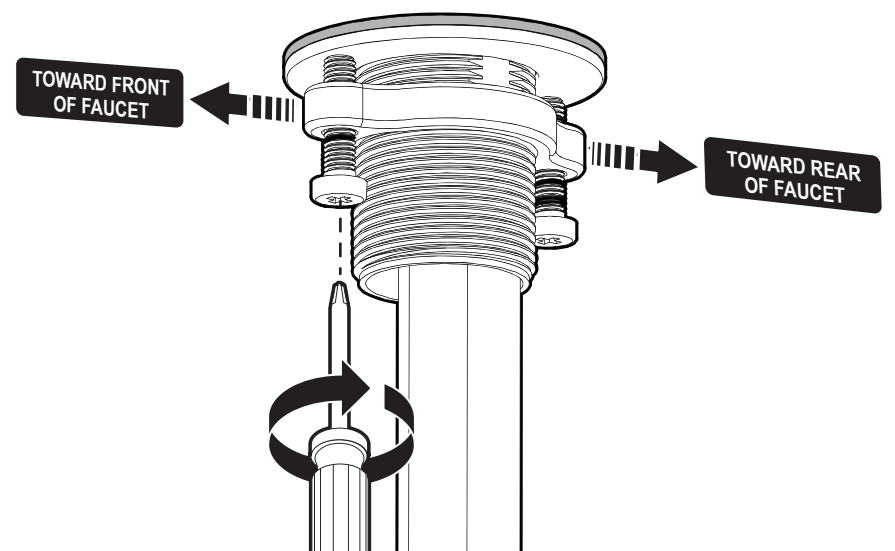


IMPORTANT

The SPEAKMAN logo at the base of the Faucet should face forward when properly installed.

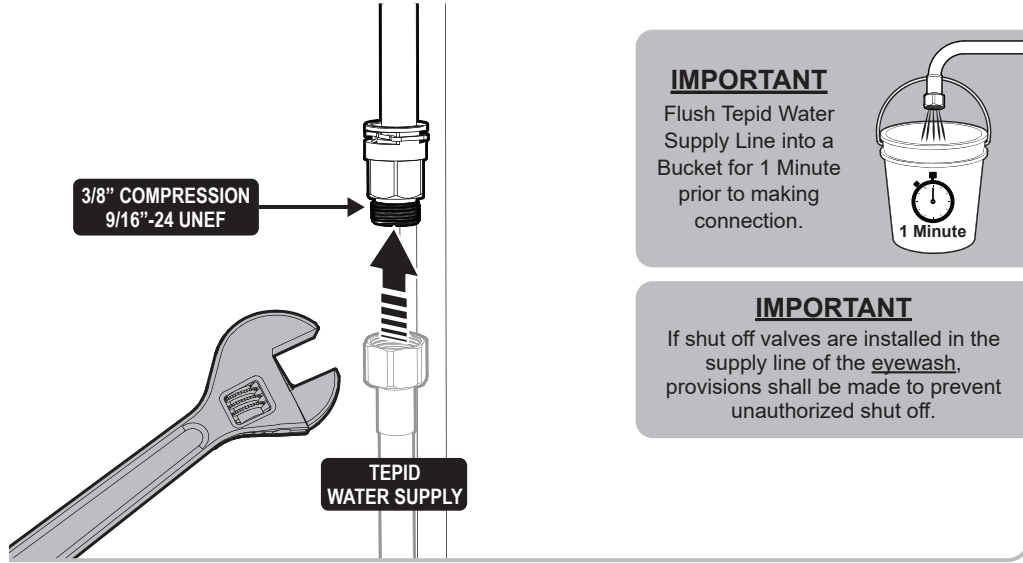
SECURE FAUCET INTO POSITION

- 4 Position Mounting Nut so the Mounting Nut Screws are aligned towards the front and rear of Faucet as shown below. Final tighten Mounting Nut Screws using a Phillips Screwdriver.



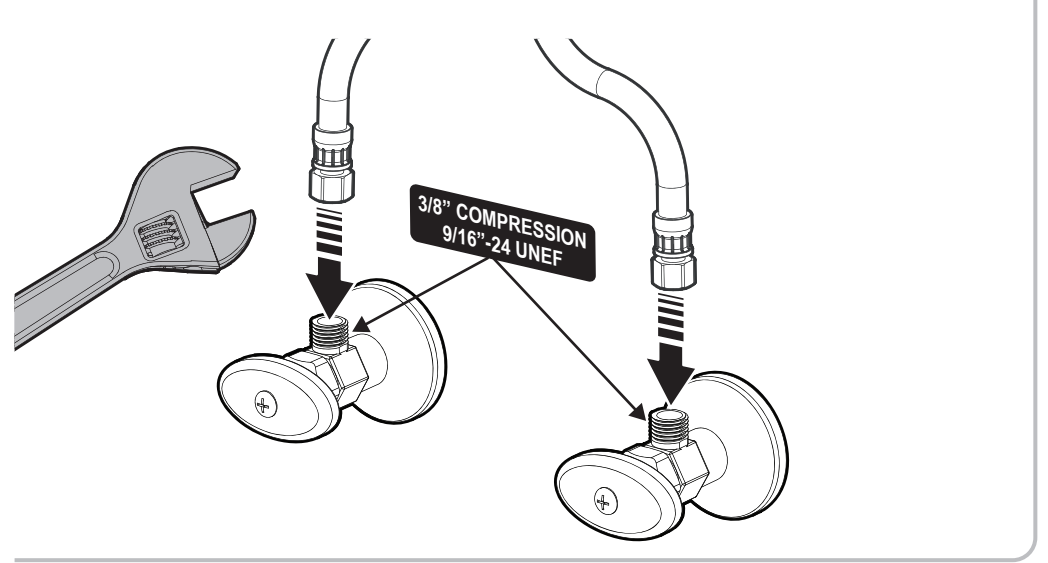
EYEWASH CONNECTION TO TEPID WATER SUPPLY

- 5 Make **TEPID WATER** connection to the inlet of the Eyewash supply. A Speakman **STW Series** Thermostatic Mixing Valve is recommended (*not included*). Tepid Water Inlet supplies are not included. Wrench tighten connections.



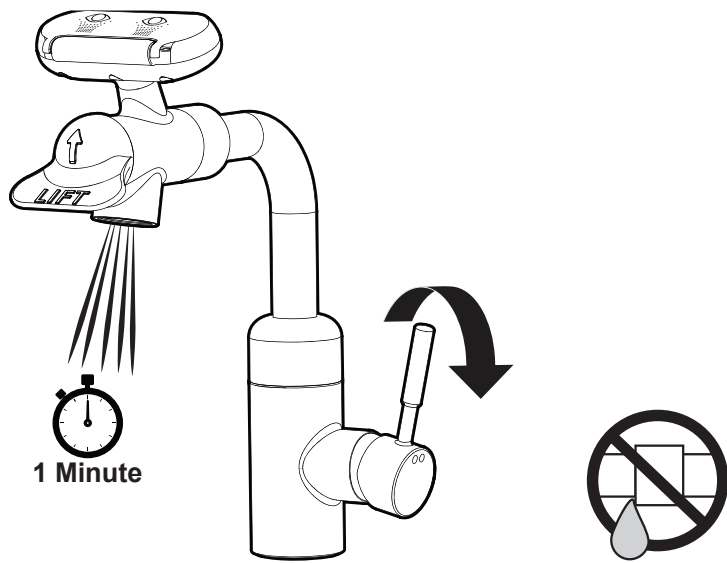
FAUCET CONNECTION TO WATER SUPPLY

- 6 Locate the two (2) Faucet Inlet Hoses, which are clearly marked to indicate **HOT** and **COLD**. Make connections to existing **HOT** and **COLD** Supply Stops. The Inlet Hoses are 9/16"-24 UNEF and will accept a 3/8" Compression Fitting. Wrench Tighten.



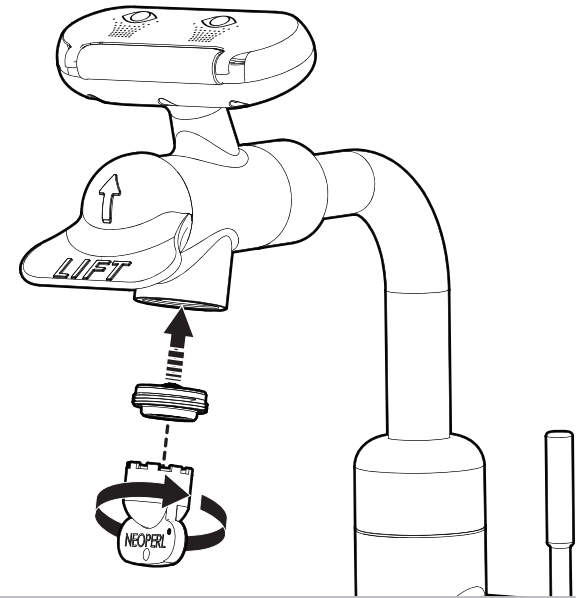
FLUSH FAUCET SYSTEM

- 7 Turn "ON" water supplies to both the Faucet and the Eyewash. Activate the Single Lever Faucet Handle and allow Faucet to run for 1 minute to flush out any debris. Inspect all connections for leaks.



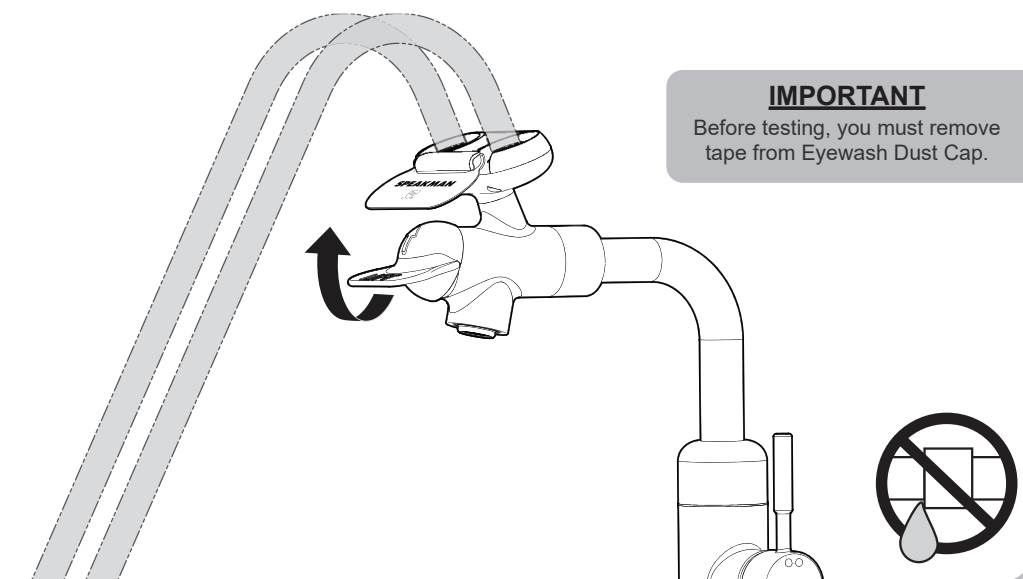
INSTALL FAUCET AERATOR

- 8 Install Faucet Aerator using the included Aerator Wrench.



TEST EYEWASH

- 9 Lift Eyewash Handle to activate Eyewash and test for proper operation. See "EYEWASH FLOW DATA" chart. Inspect all connections for leaks.



PRODUCT WARRANTY

3 Year Limited Warranty: Speakman Safety products are warranted to be free of defects in material and workmanship for 3 years from date of installation. ("Warranty Period") Speakman warrants to its purchasers ("Buyer") that goods are sold free from defects in materials and workmanship and conform to Speakman's specifications at the time of manufacturing, provided the goods are properly installed and maintained. Buyer's sole and exclusive remedy for any goods that may prove to have had a non-conformance within the Warranty Period shall be, at Speakman's sole option, the repair or replacement of the non-conforming goods. For additional information please go to www.speakman.com.

CALIFORNIA PROPOSITION 65



CALIFORNIA PROPOSITION 65:

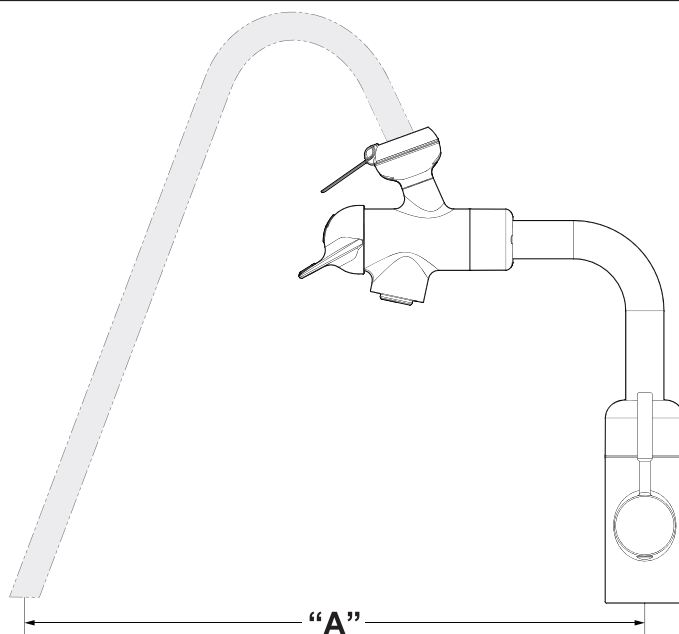
WARNING: This product can expose you to chemicals including lead, which is known to the State of California to cause cancer and birth defects or other reproductive harm. For more information go to www.P65Warnings.ca.gov.

Wash hands after installation, repair, or removal of this product.

EYEWASH FLOW DATA

SEF-1880					
FLOWING PRESSURE		FLOW RATE		PLUME DISTANCE "A"	
psi	bar	gpm	L/min	in.	cm
30	2.07	2.05	7.76	11.88	30.16
40	2.76	2.15	8.14	12.13	30.80
50	3.45	2.05	7.76	12.00	30.48
60	4.14	2.07	7.83	12.25	31.12
70	4.83	2.20	8.33	12.50	31.75
80	5.52	2.25	8.52	12.75	32.39

NOTE: Flow Rate and Plume Distance data is for reference only.

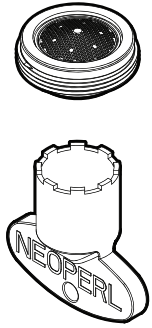


IMPORTANT

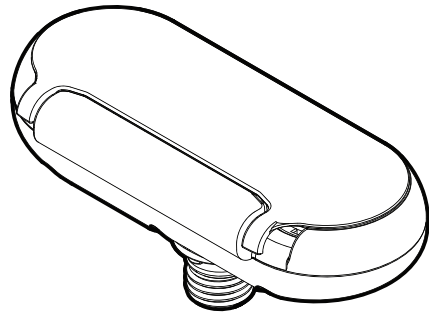
If plume heights are low, check to ensure that your supply valves are fully open. If there is a noticeable height difference between the two plumes, remove the aerators and flow controls. Then flush out and remove any debris that would inhibit the flow of water.

REPAIR PARTS

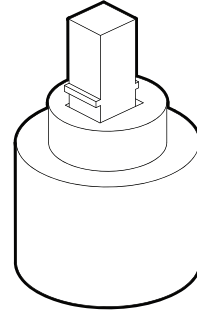
RPG05-111352
1.2 GPM
REPLACEMENT AERATOR



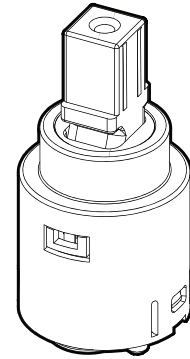
RPG38-110458
REPLACEMENT
EYEWASH SPRAY HEAD



RPG05-0909
REPLACEMENT EYEWASH
ACTIVATION CARTRIDGE



RPG05-112703
REPLACEMENT FAUCET
MIXING CARTRIDGE



ROUGH-IN DIAGRAM

COMPLIANCE

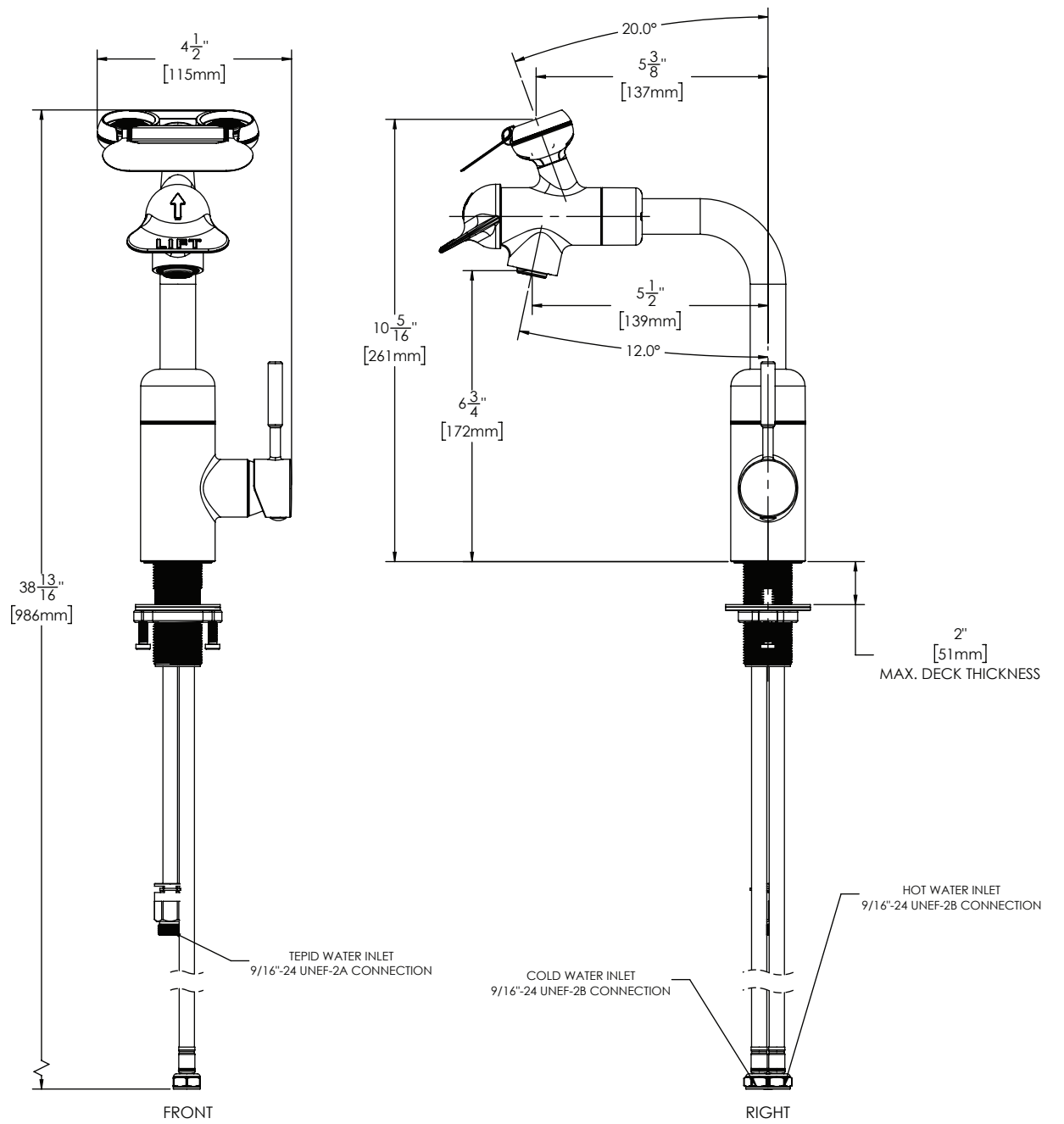
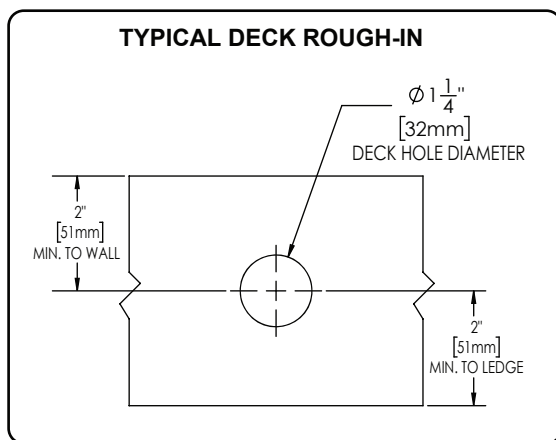
ANSI / ISEA Z358.1 certified
ASME A112.18.1 / CSA B125.1 certified
IGC 272 certified
NSF / ANSI 61 certified
NSF 372 certified

CONNECTIONS

Faucet Inlets: 9/16"-24 UNEF Female
(3/8" Compression)
Eyewash Inlet: 9/16"-24 UNEF Male
(3/8" Compression)

NOTES

Installer to supply necessary inlet connections.



DIMENSIONS SUBJECT TO CHANGE WITHOUT NOTICE.